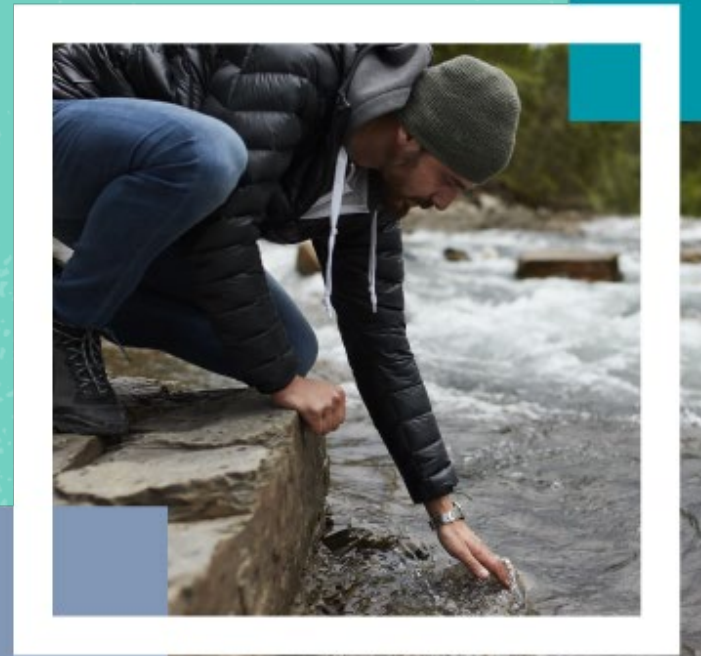


The energy transition in a changing world

Sustainability Investor Roundtable

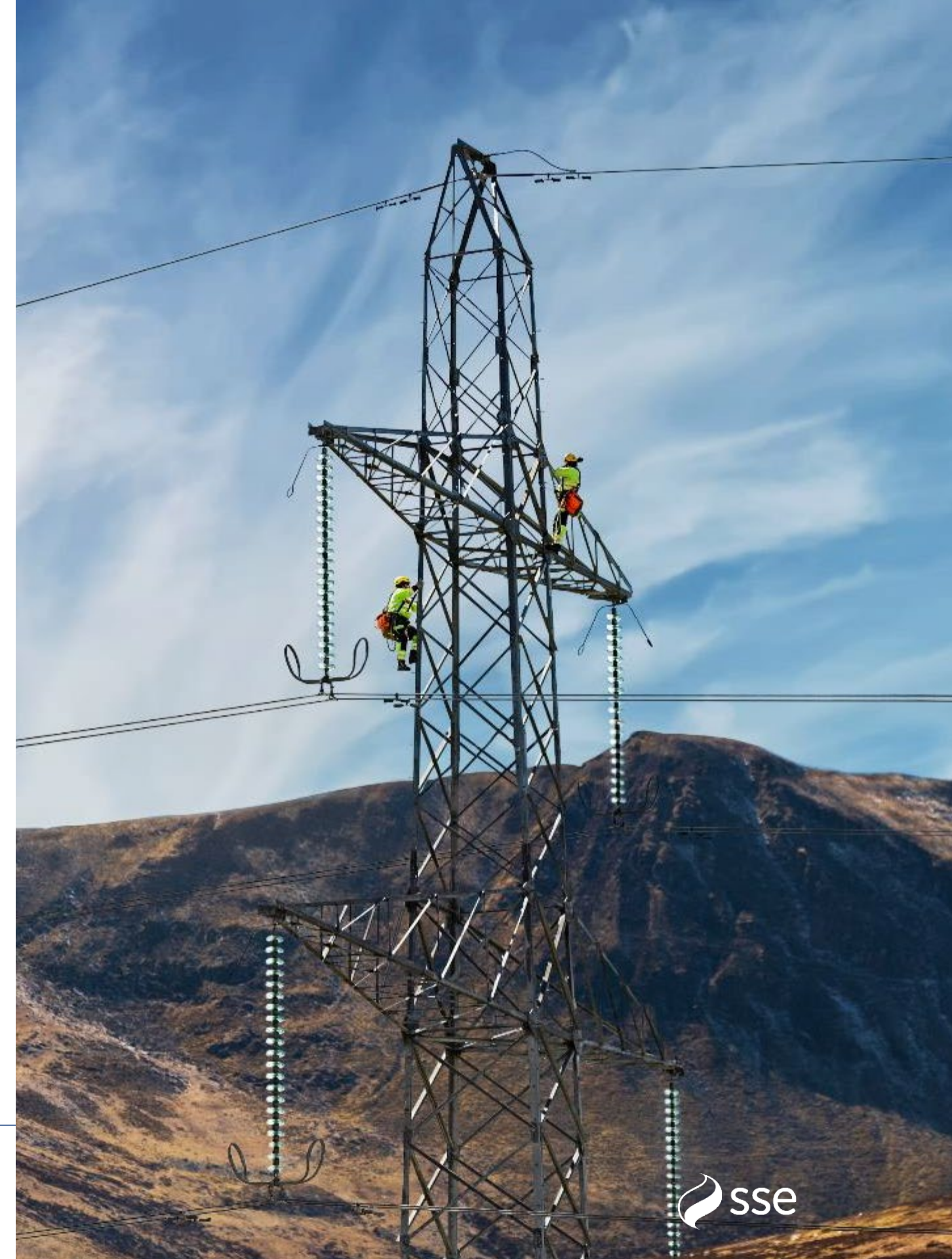
16 June 2025



Agenda

Sustainability Investor Roundtable

- **Networking lunch**
- **Introductory remarks**
 - **The Energy Transition in a Changing World**
 - Sir John Manzoni
 - **Transparency through the transition**
 - Martin Pibworth
 - **A long-term commitment to sustainability**
 - Rachel McEwen
- **Q&A discussion**



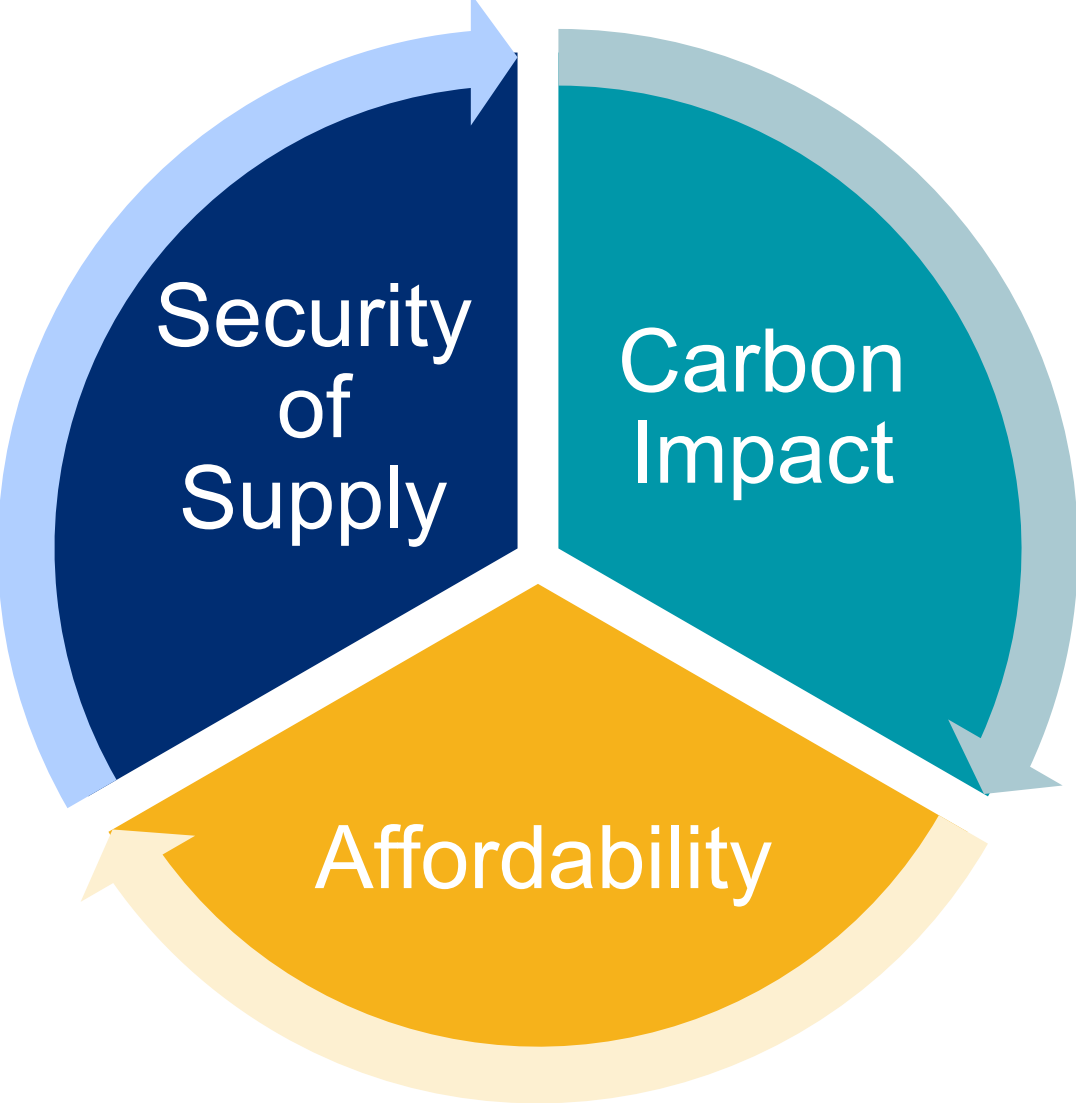
The energy transition in a changing world

Sir John Manzoni

Chair



A rapidly changing world, same trilemma



Transparency through the transition

Martin Pibworth

Chief Executive designate

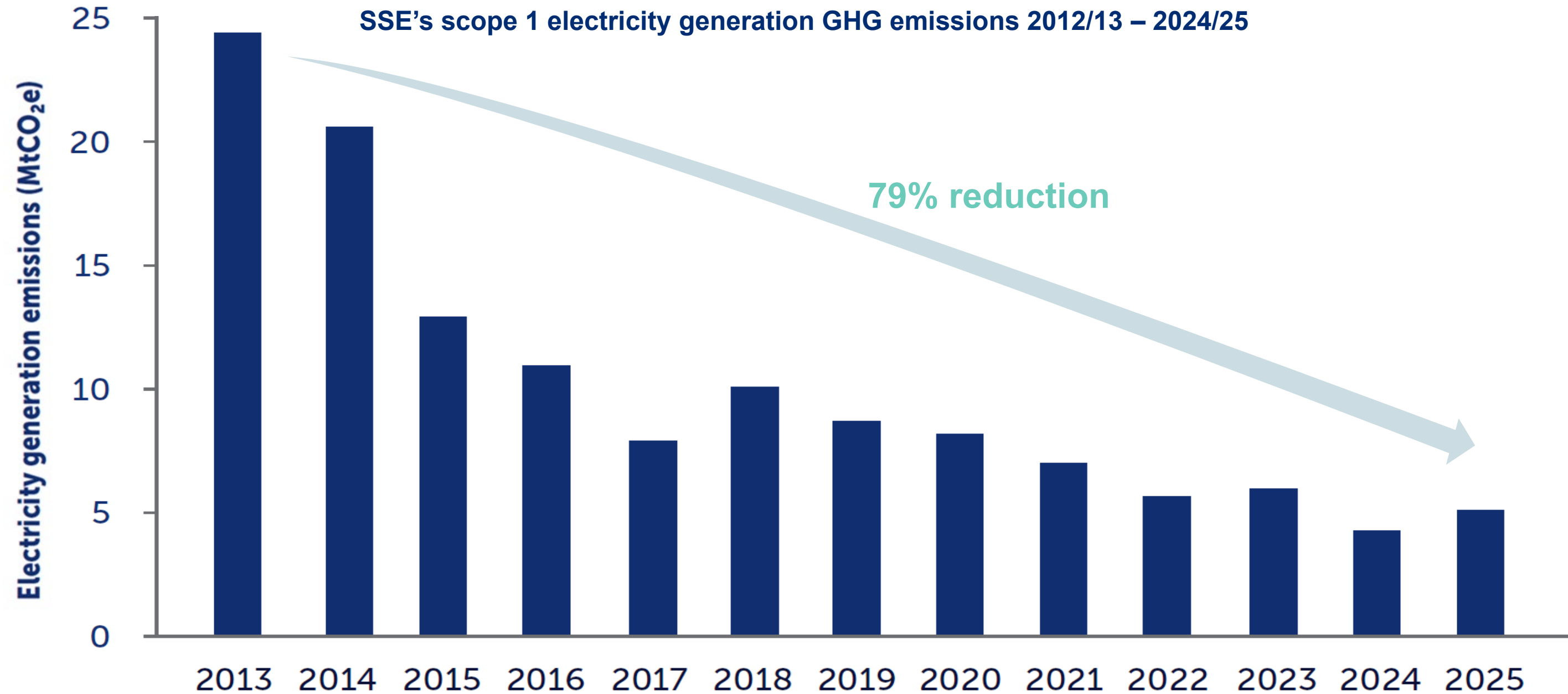


Evolving the Net Zero Transition Plan

- ✓ Refreshed actions being taken to deliver on carbon targets
- ✓ Added action on nature restoration
- ✓ New emissions scenarios shown following publication of Clean Power 2030 Action Plan
- ✓ Aligns with Transition Plan Taskforce guidance



Remarkable long-term reduction in emissions



Strong progress made to date on carbon targets

- 2024/25 is halfway between SSE's base year and key milestone targets in 2030/31
- Scope 1 carbon intensity and absolute scope 1 and 2 emissions increased compared to 2023/24
- Overall, SSE is making progress against its near-term science-based targets

2024/25 progress against SSE's science-based targets from a 2017/18 base year

Scopes 1 and 2

Reduce the carbon intensity of scope 1 GHG emissions by 80% by 2030

36% progress

2024/25: 218gCO₂e/kWh (29% reduction from base year)

Reduce absolute scope 1 and 2 GHG emissions by 72.5% by 2030

67% progress

2024/25: 5.70MtCO₂e (48% reduction from base year)

Scope 3

Reduce absolute GHG emissions from use of products sold by 50% by 2034

46% progress

2024/25: 1.95MtCO₂e (23% reduction from base year)

Engage with 90% of suppliers by spend to set science-based targets¹ by 2030

51% engaged

2024/25: 51% by spend engaged

¹ SSE achieved its target to engage 50% of suppliers by spend to set science-based target by 2024 and has reset the target to engage 90% by 2030.

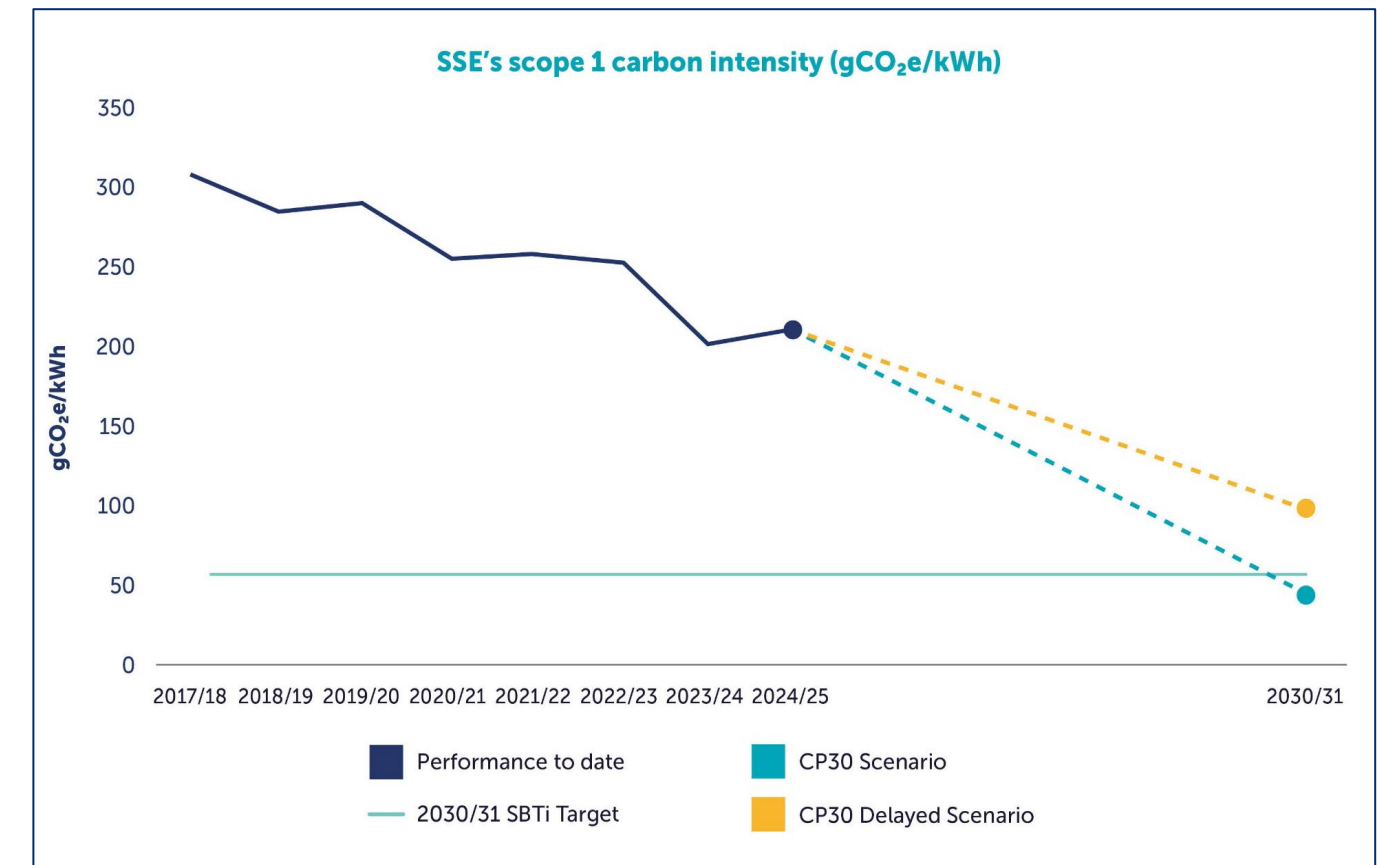
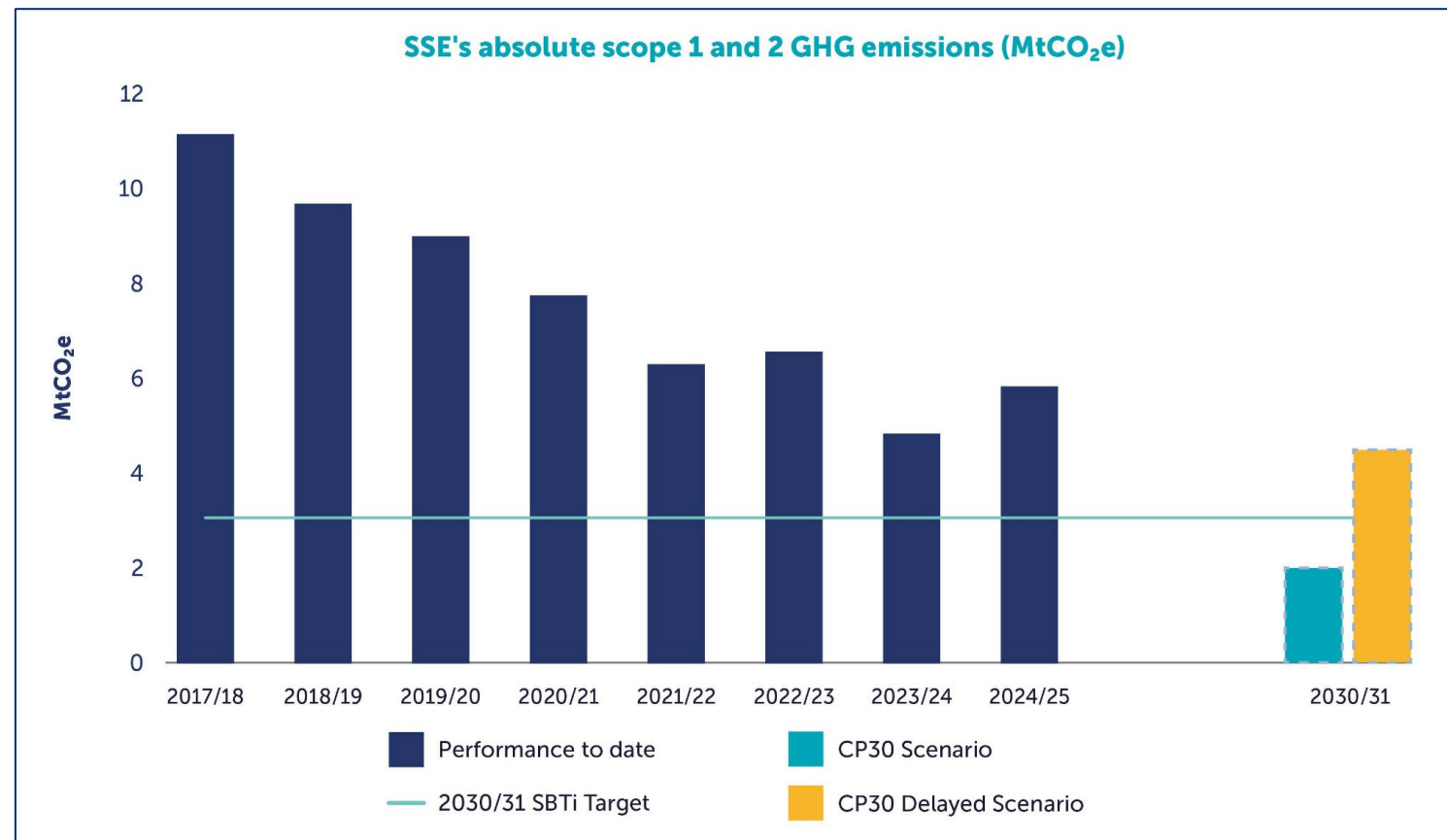
Net zero transition plan on a page

	Near term (2025 - 2035)				Long term (2035 - 2050)	
	2025				2035	2050
Targets	Carbon intensity Reduce the carbon intensity of scope 1 GHG emissions by 80% by 2030, from a 2017/18 base year.	Absolute emissions Reduce absolute scope 1 and 2 GHG emissions by 72.5% by 2030 from a 2017/18 base year.	Supplier engagement Engage with 90% of suppliers by spend to set science-based targets by 2030.	Gas sold Reduce absolute GHG emissions from use of products sold by 50% by 2034 from a 2017/18 base year.	Scope 1 and 2 Net zero for SSE's scope 1 and 2 emissions by 2040.	Scope 3 Net zero for all SSE's remaining scope 3 emissions by 2050.
Actions	<div> <div> Generation (Scope 1) <ol style="list-style-type: none"> 1. Reduce emissions from unabated gas generation 2. Develop new low-carbon flexible generation 3. Grow the renewable energy portfolio 4. Transparent advocacy in favour of enhanced policy 5. Explore options for neutralising residual emissions </div> <div> Operations (Scope 1 and 2) <ol style="list-style-type: none"> 6. Reduce electrical losses from SSEN Distribution 7. Reduce reliance on Scottish Island backup diesel generation 8. Reduce SSEN's leakage and reliance on SF₆ 9. Switch vehicle fleet to electric 10. Deliver a net zero property estate </div> <div> Value chain (Scope 3) <ol style="list-style-type: none"> 11. Support customers to fuel switch and use less gas 12. Advocate for a pathway for decarbonised heat 13. Work with joint ventures to deliver a net zero pathway 14. Collaborate with suppliers on net zero action 15. Work with suppliers to improve scope 3 reporting </div> </div> <div> Climate adaptation and resilience <ol style="list-style-type: none"> 16. Continuous review of adaptation Plans at business unit level, whilst participating fully in national adaptation frameworks </div> <div> The natural environment <ol style="list-style-type: none"> 17. Ensure all onshore large capital projects in the UK and Ireland incorporate SSE's nature-related targets </div> <div> Just transition <ol style="list-style-type: none"> 18. Publish an annual update on delivery of the Just Transition Strategy </div>					

Emissions impacted by progress toward CP30

CP30 Scenario where Clean Power 2030 achieved, would see SSE comfortably meet near-term science-based targets

CP30 Delayed Scenario sees new large-scale renewables delayed, increasing requirement for higher carbon alternatives



Charting a new course to thermal decarbonisation

**Sustainable
Biofuel in Ireland**



**Decarbonisation-
ready CCGTs in GB**



**Range of
decarbonisation options**

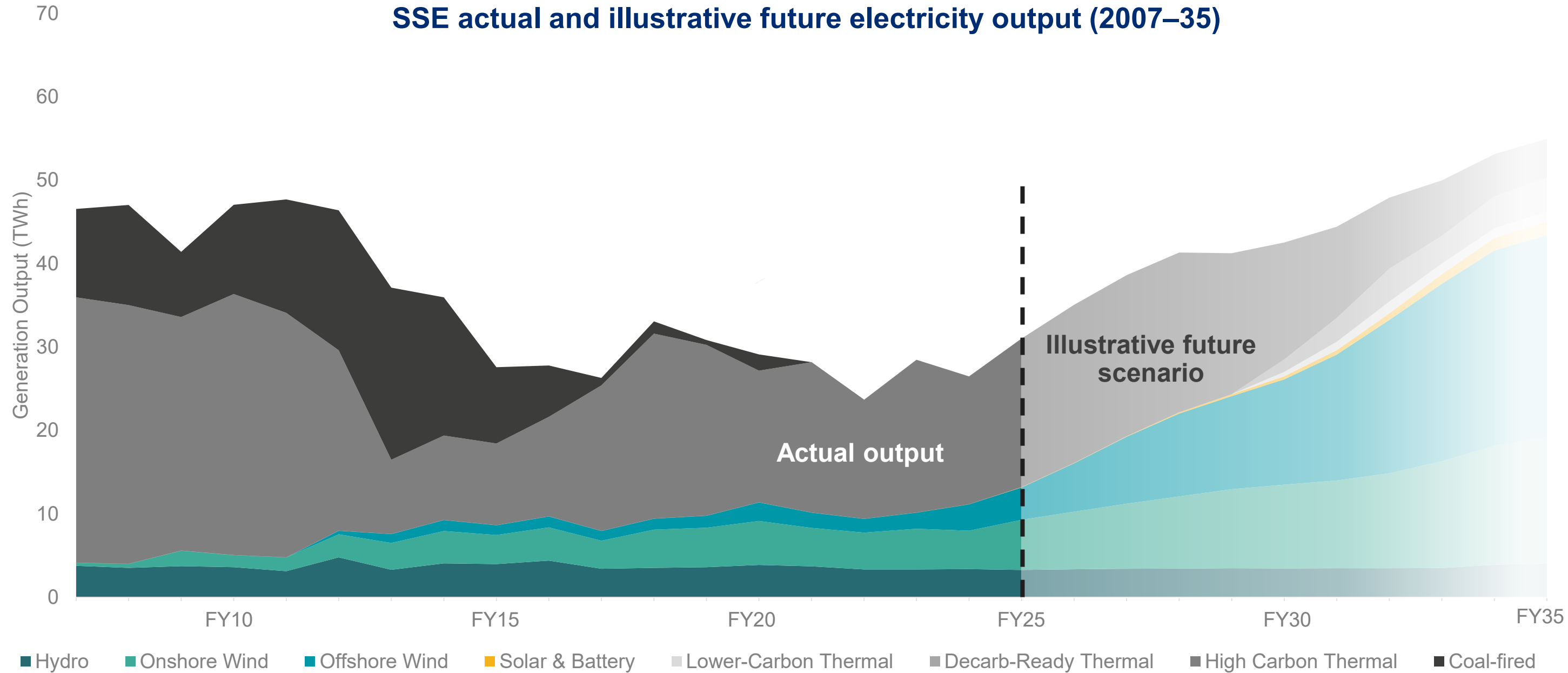
**H2 Power programme
with Siemens**



**Aldborough
Hydrogen Pathfinder**



Decarbonising with the lights on



Output estimates represent SSE's total equity share of its portfolio of assets across. This includes both scope 1 and scope 3 assets.
 Lower-carbon Thermal includes sustainable biofuel, Hydrogen blending and CCS projects. Decarb-ready Thermal includes output from CCGT stations that are H2 ready. Onshore Wind includes SSE Renewable's Southern European pipeline.
 Progression towards lower-carbon and decarb-ready ambitions will be subject to government policy and security of supply considerations

A long-term commitment to sustainability

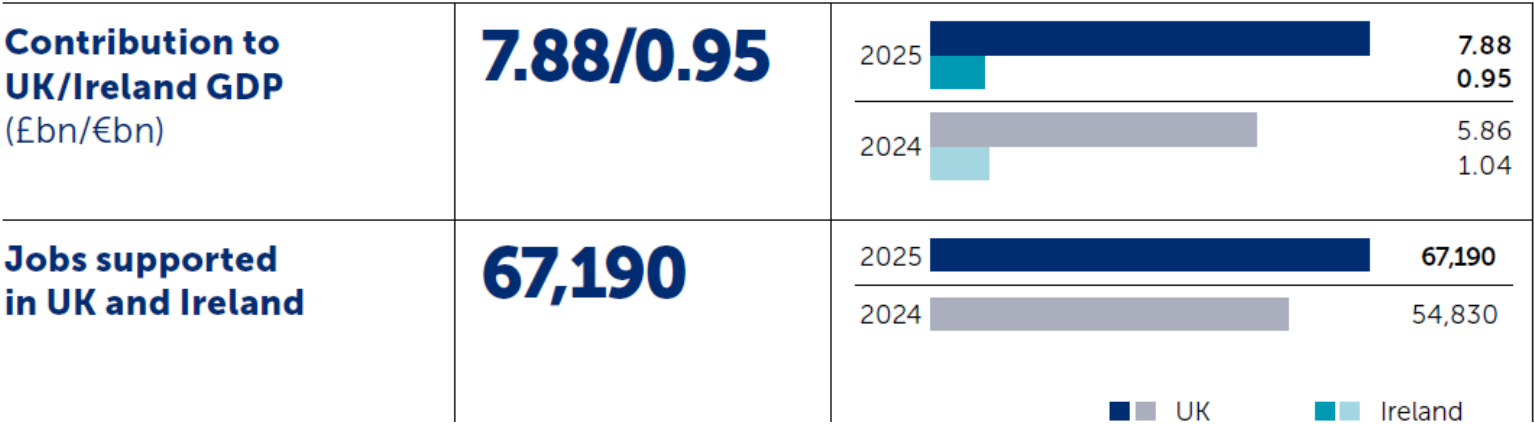
Rachel McEwen

Chief Sustainability Officer



Creating and sharing value

UK and Ireland

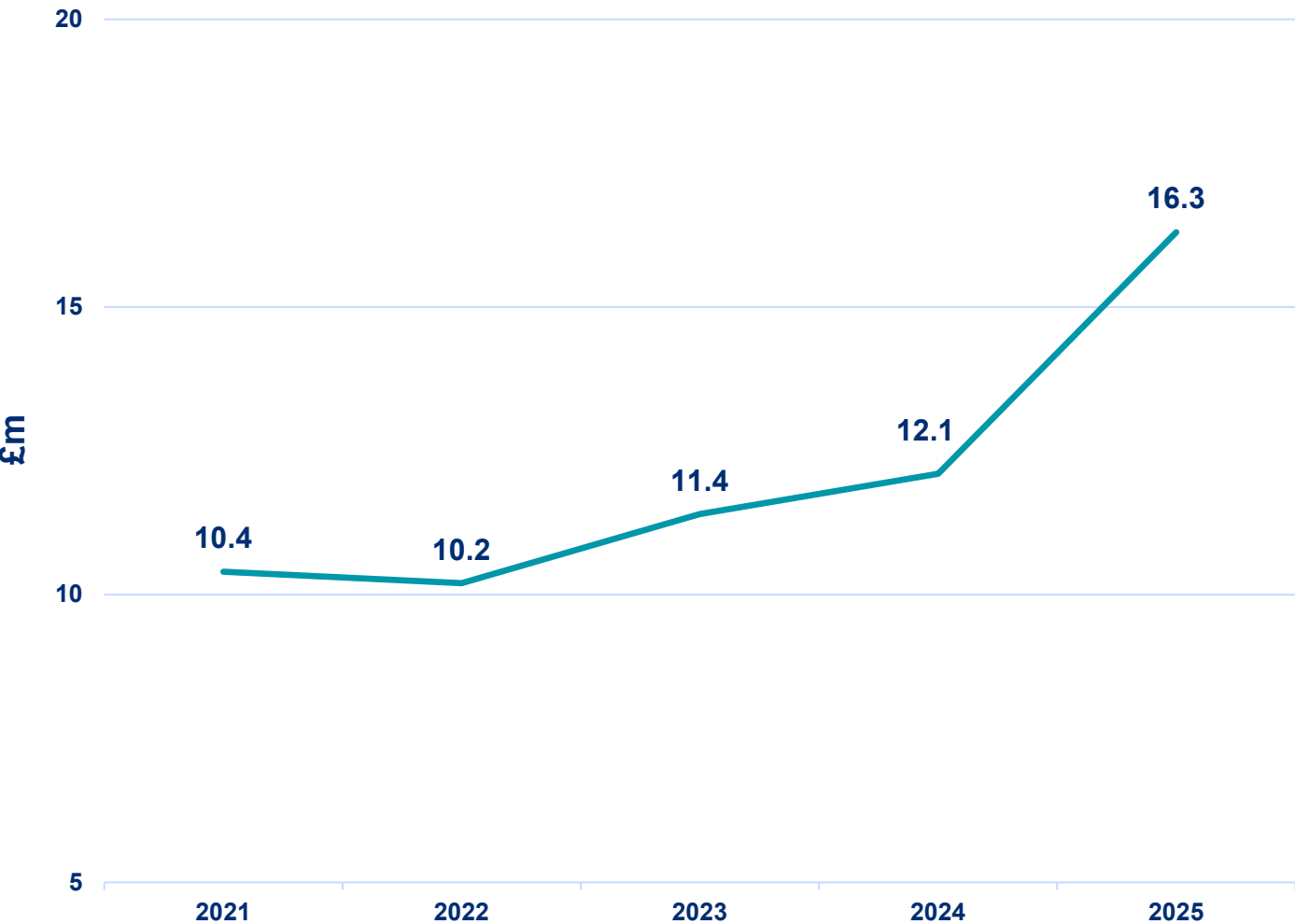


Scotland



Creating lasting local legacy

Community investment funds awarded
from 2021 to 2025 (UK and Ireland)



SSEN Transmission



A pledge for new housing to unlock long-term growth



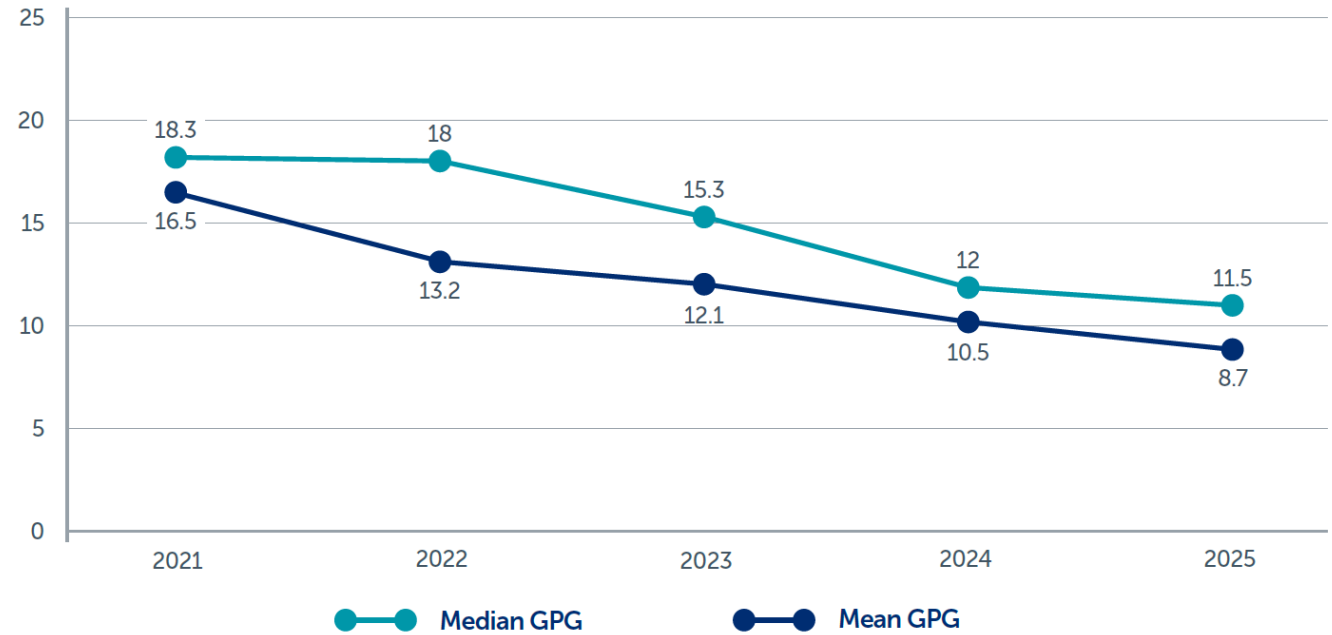
Supporting the delivery of more than

1,000

new homes across the north of Scotland

A sustainable approach to inclusion

UK gender pay gap progress from 2021 to 2025



Senior leadership gender ambitions and progress



Roundtable discussion

ir@sse.com