



Scottish & Southern  
Electricity Networks

**SHE**

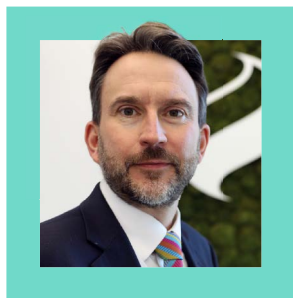
# Environment Vision

2025/26



# Introduction

Taking care of ourselves, each other and the environment.



**Mark Patterson**  
SHE Director, SSE

We are privileged to work in some of the most stunning natural habitats and we're committed to making sure they stay that way.

That's why our Safety Family approach recognises the need to take care of ourselves, each other and the environment. However, our focus isn't just on minimising the negative impact of our work, we also want to enhance the areas where we operate and we're well on the way to achieving this.

And in 2024/25, we saw a significant reduction in serious and minor environmental incidents, a trend we hope to continue this year.

We worked with colleagues and contract partners to develop an environment specification for contracts and will continue to work with them to improve performance.

We held our first Environment Conference in December 2024, bringing together SSE's environment community to review our strategy and share best practice.

This year, we'll continue to focus on three key pillars to help achieve our environmental aims:

**Responsible consumption and production:** we want to cut down the use of non-renewable and single-use products and re-use or recycle where possible.

**Effective management and governance:** we carefully monitor and manage our environmental impact and risk, and aim to protect local environments from issues such as spills, nuisance, pollution and impact to nature.

**Taking care of the natural environment:** we support the conservation, restoration and sustainable use of the world's land and water resources.

We have robust environmental governance policies in place and work with a wide range of stakeholders to produce sustainable, environmental outcomes.

Our 2025/26 Environment Vision sets out how we will implement our environmental strategy and deliver our key goals through strengthening our local SHE communities and making it easier for colleagues and contract partners to do the right thing.

We are enhancing our targets in Responsible Consumption and Production, have reduced our target on Serious Environmental Incidents and will continue to report nature performance on a monthly basis through our SHE Reporting process.

By doing this, we can continue to take care of ourselves, each other and our environment so that we all get home safe and protect our planet.



# 2030 Goals

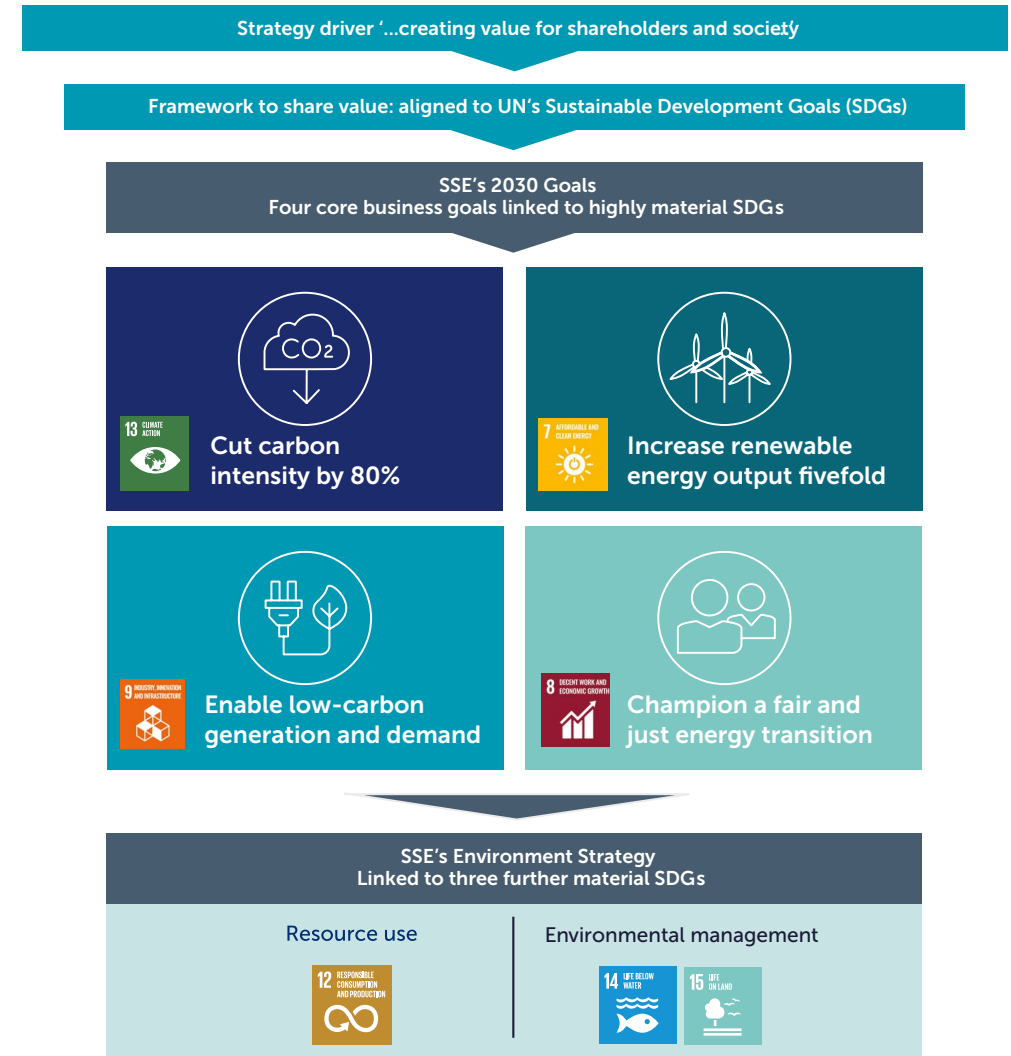


SSE has updated the targets on four UN sustainability goals which will see us strive to cut emissions further and faster and address the challenge of climate change in a just and fair way.

## The goals are:



The goals are designed to ensure that SSE has a credible and verified target that sets accelerated science-based targets (SBTi) on the 1.5°C power sector pathway.





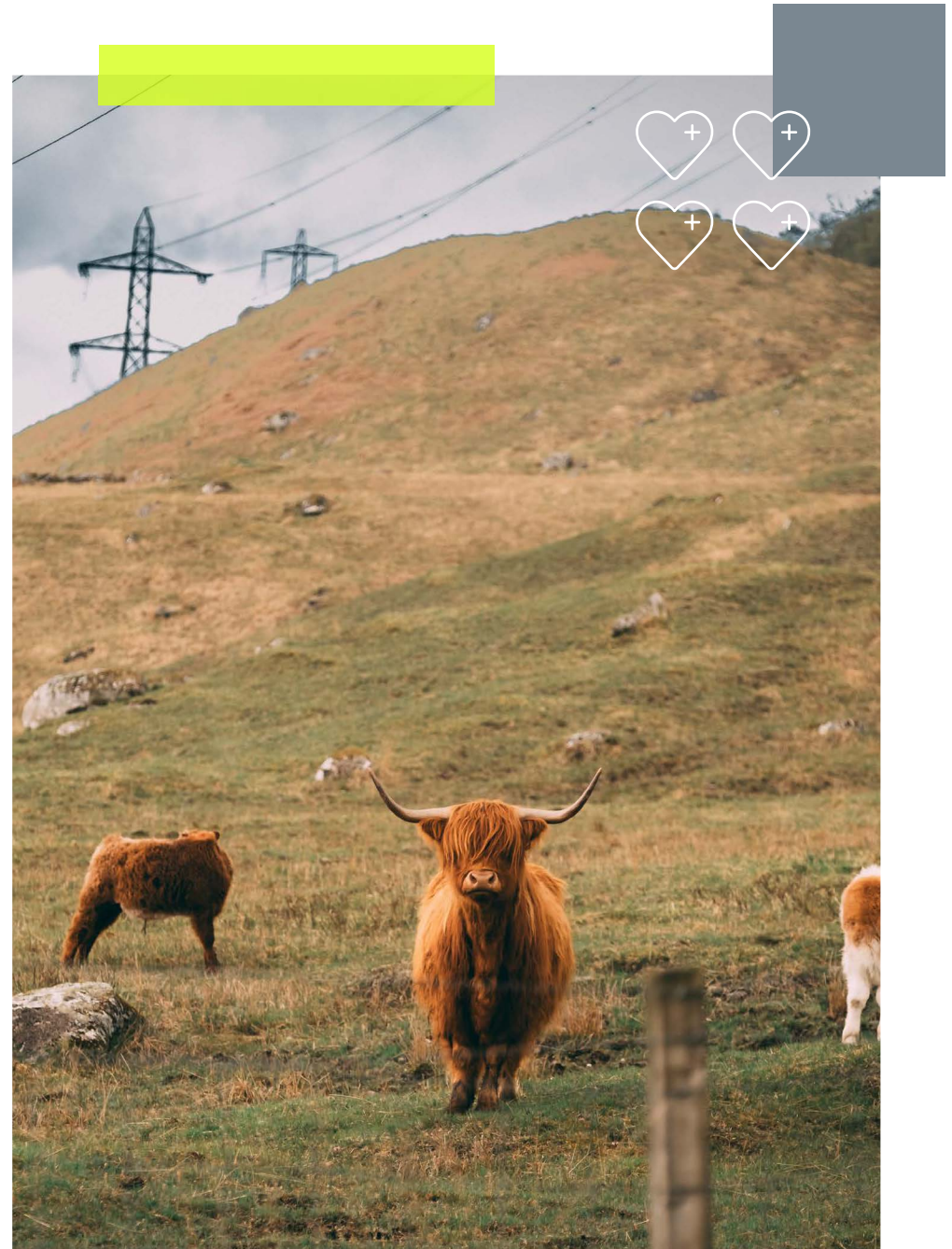
# Environment Strategy

To achieve our core purpose to “provide energy today while building a better world of energy for tomorrow”, SSE’s strategy aims to create value for both shareholders and society.

The four goals outlined above have been agreed by the Board, with three further environmental priority pillars identified as being material in terms of SSE’s impact on the sustainable development of the world we operate within.

Our environmental strategy, which is underpinned by an ethos of compliance, provides a pathway to engage our stakeholders by holding us accountable for our performance with targets and indicators measuring our success. We continue to use the three strategy pillars to guide our focus for our environmental vision and proposed Group environmental objectives for 2025/26.

## Environment strategy pillars

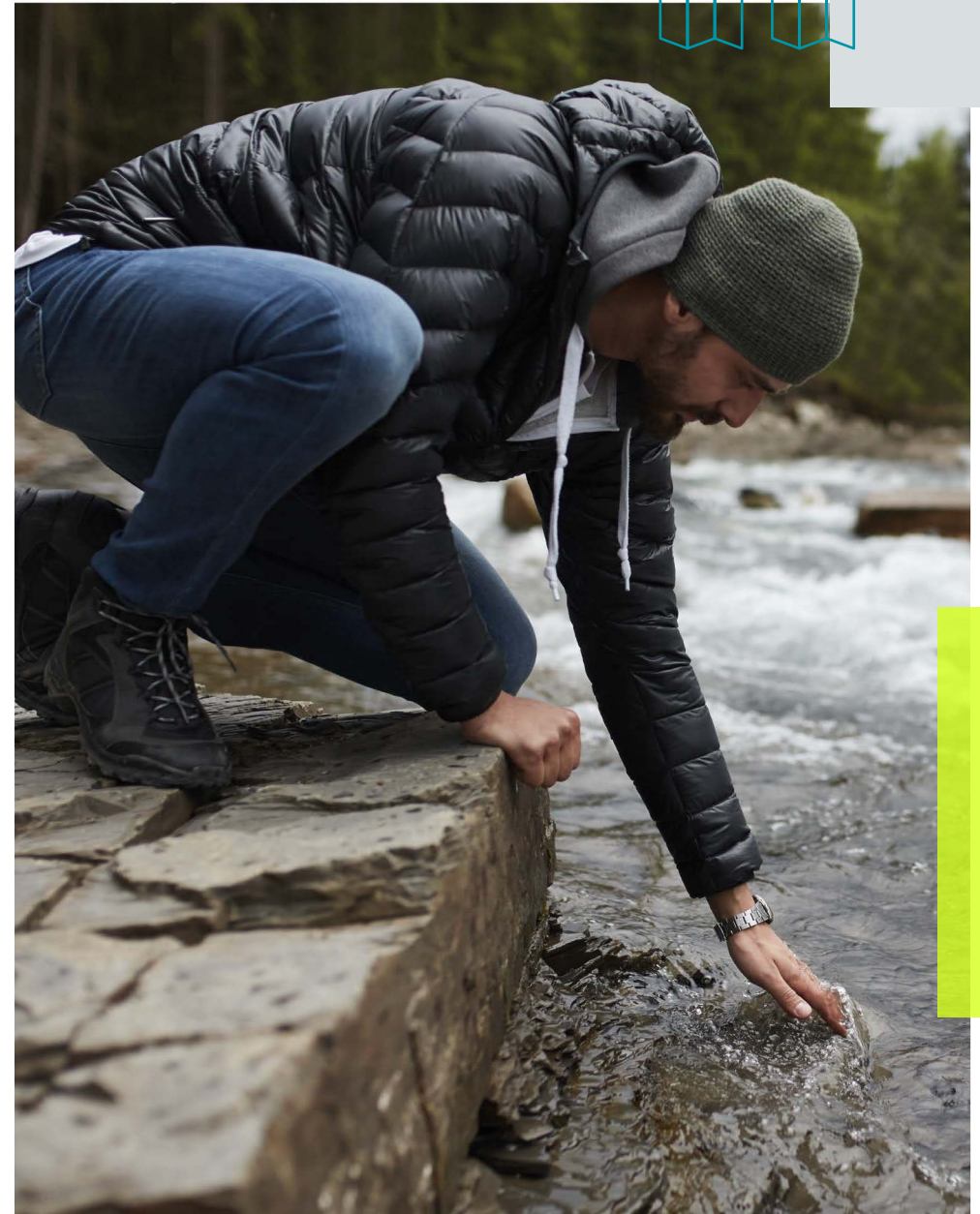


# Environmental management and governance

Providing a framework for the careful risk management of environmental impacts, protecting local environments from waste, pollution and damage to nature.

## SSE's 2025/26 group goals with regards to Environmental Management and Governance are:

- Target no more than 32 Serious Environmental Incidents in 2025/26
- Report data monthly and via a Power BI Report
- Monitor and baseline key environmental risk areas including oil loss, fluid filled cable (FFC) leaks, SF6 (Sulphur Hexafluoride) Leaks
- Monitor environmental investigations and related learning outcomes
- Maintain ISO14001 accreditation across all activities
- Work with business units, supply chain and corporate partners to develop environmental training and engagement opportunities across SSE
- Manage governance and compliance through the Environment Sub Group



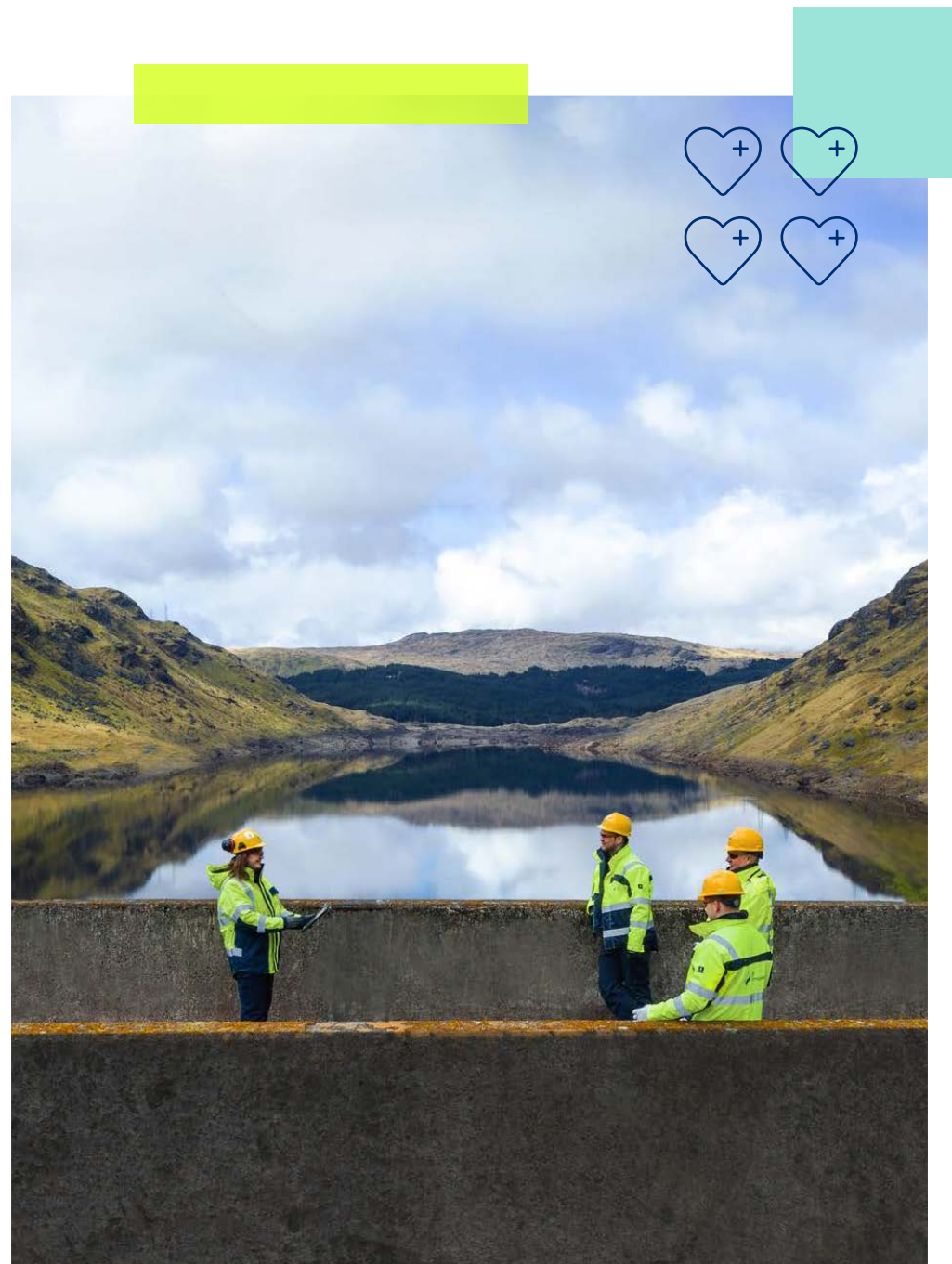


# Responsible production and consumption

Working towards more sustainable patterns of resource consumption; reducing reliance on non-renewable and single use products, linking to the objectives of UN sustainable goal 12 (Responsible Consumption and Production).

## SSE's 2025/26 group goals for Responsible Consumption and Production are:

- Group and Business Unit Responsible Consumption and Production target is to divert 97% by tonnage from landfill and recycle 65% by tonnage
- Report data monthly and via a Power BI Report
- Recognise success via Annual Recycling Awards
- Conduct an assurance audit of SSE waste management processes and data
- Support business areas on a pathway to applying Circular Economy principles and to send zero waste to landfill and increase recycling
- Develop a Circular Economy Roadmap for SSE
- Manage governance and compliance through the Responsible Consumption and Production Working Group



# Natural environment

Supporting the conservation, restoration and sustainable use of the world's land and water resources; and promoting the integration of amenity, ecosystem and biodiversity improvement into business activities, linking to UN sustainability goals 14 and 15 (life below water and life on land).

## SSE's 2025/26 group goals for Natural Environment are:

- Enhance the natural environment by achieving no 'net loss' in biodiversity on all UK/ROI onshore Large Capital Projects consented from 2023/24 onwards, and 'net gain' in biodiversity on those consented from 2025/26 onwards
- Achieve no net loss of native woodland on all UK/ROI onshore large capital projects consented from 2024/25
- Monitor compliance to these commitments through monthly reporting for biodiversity net gain and quarterly for our no net loss of native woodland target
- Develop SSE approach to nature related disclosures
- Develop a Nature Strategy for SSE
- Manage governance and compliance through the Nature Working Group



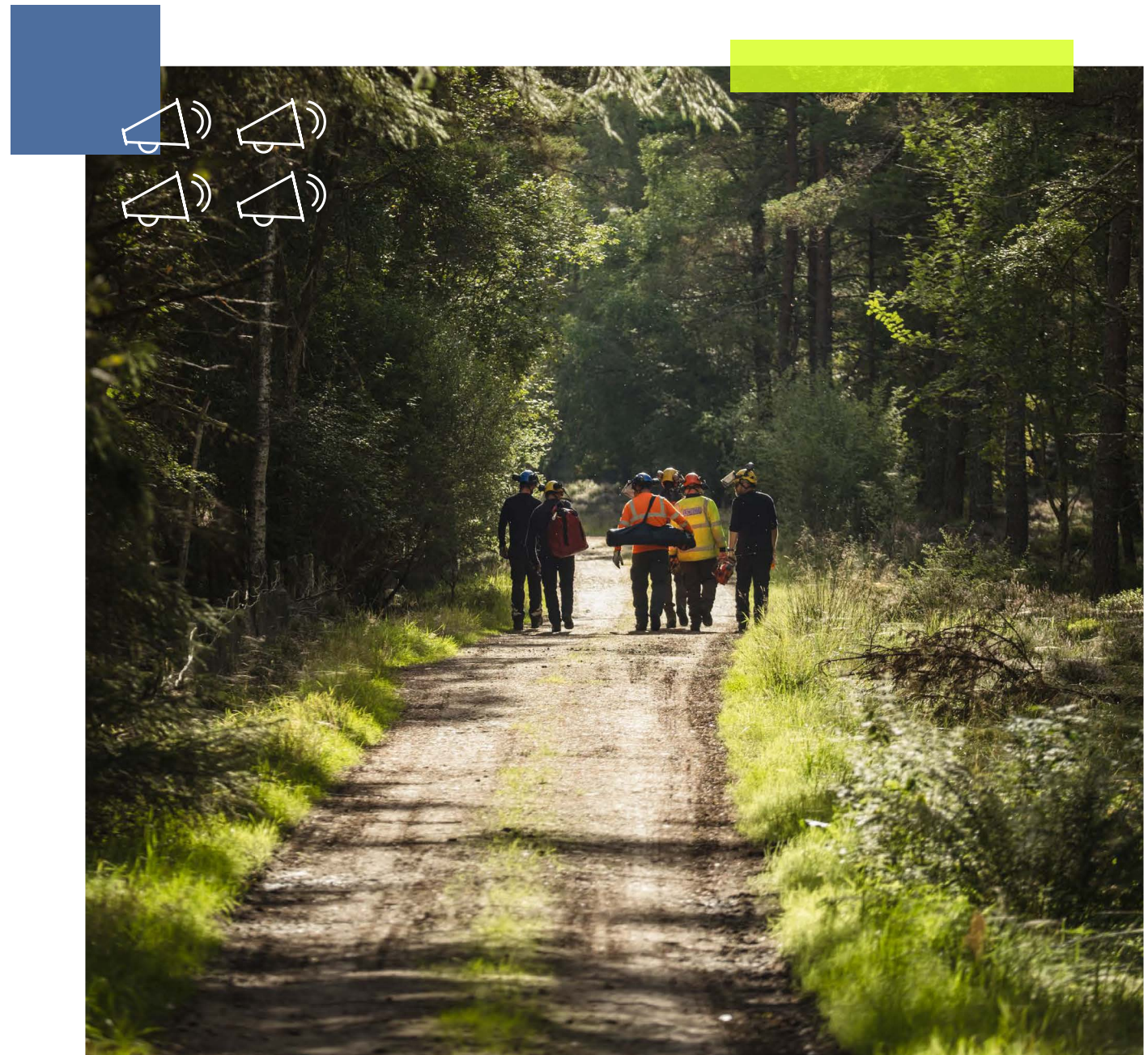


# How Business Units Contribute

Our environment strategy priority areas and Group-wide goals provide guidance for our businesses to use when undertaking their daily activities.

As each of our businesses has different interactions and impacts on the environment, they have their own detailed environment plan and goals tailored specifically to their activities, which has been agreed by their own respective business unit SHE or Executive Committee.

This means their efforts are focused on the areas in which their most material environment risks and opportunities arise, and they have greatest potential to influence. By having focused business unit environment plans, supported by the governance of the SSE Environment Sub Group, we have a greater chance of achieving our Group-wide environment goals.





# Reporting our 'e' goals performance

SSE has a set of reports that it publishes annually that show progress against its environment priorities and goals.

Our Sustainability Reports and Annual Reports also set out the steps SSE is taking to achieve the priorities and goals set out in the Group environment strategy, with specific case studies on environmental management and governance, resource consumption and production and the natural environment.

## Want to know more?

- ↓ Environmental Awareness Training
- ↓ Sustainability | SSE
- ↓ Safetynet
- ↓ SHE Review 24/25

For further information, please contact your business area Environment Lead or contact [environment@sse.com](mailto:environment@sse.com).

